



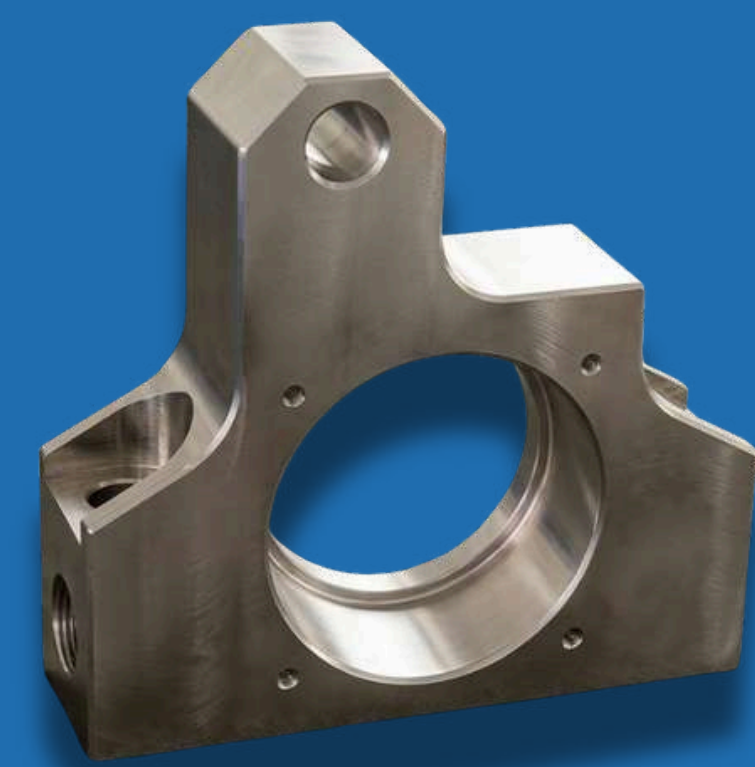
## INDUSTRY TRENDS WATCH IN 2026

Industrial manufacturing is entering a predictive era driven by automation and data analytics. Equipment is increasingly integrated with sensors and monitoring systems that track performance, wear, and operational stress in real time.

Predictive maintenance helps reduce unexpected failures and improves operational efficiency in power and agricultural machinery. This shift places higher importance on dimensional accuracy and manufacturing consistency.

Precision-machined components with reliable tolerances ensure proper functioning of automated systems. Manufacturers capable of maintaining repeatable quality and process control will play a vital role in supporting next-generation industrial and energy applications.

## PRODUCT SPOTLIGHT



### RESISTOR SPACER ALUMINUM

This heavy-duty aluminum resistor spacer, weighing 62 kg, is engineered for high dimensional accuracy. A critical bore tolerance of 0.025–0.04 mm is achieved after electroless nickel plating with 40–60 micron thickness. Position tolerance of 0.018 mm, surpassing the 0.02 mm requirement, ensures precise alignment and dependable assembly performance.



## LIFE @ SEE

### Medical Checkup Camp at See Linkages

SEE Linkages organized an employee health check-up camp, encouraging preventive care, well-being awareness, and active participation across the team.