



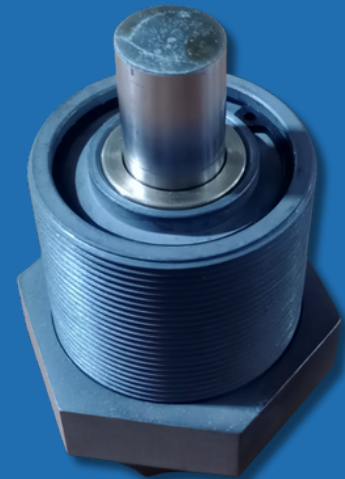
INDUSTRY TRENDS WATCH IN 2025

Shock Absorber assemblies used in electrical switchgear are evolving with increasing emphasis on precision, durability, and corrosion resistance. As switchgear systems handle higher loads and voltages across diverse environments, the demand for assemblies incorporating advanced materials and coatings is rising.

Industry trends show a shift towards multi-material integration, like brass and carbon steel, supported by enhanced surface treatments such as zinc-nickel plating for superior corrosion protection. Induction hardening and heat treatment are becoming standard to extend service life. These assemblies play a crucial role in absorbing mechanical stress during operation, ensuring safety, stability, and longevity in modern electrical distribution systems.



PRODUCT SPOTLIGHT



SHOCK ABSORBER ASSEMBLY

The newly developed Shock Absorber assembly integrates over 15 precision-machined parts made from brass, carbon steel, and sealing elements. It undergoes critical processes including heat treatment, induction hardening, and zinc-nickel plating. Designed for use in high, medium, and low voltage switchgear, it ensures durability, reliability, and consistent performance.

LIFE @ SEE

Honoring Tradition and Technology: Celebrating Machine Pooja at SEE Linkages

Through this ritual, we honor our machines as well as the spirit of hard work and dedication that fuels our success.